

Community-led Resilience Teams for Business

BUILDING STRONGER COMMUNITIES



What is a Business Community-led Resilience Team (CRT)?

A Business Community-led Resilience Team (CRT) is an all-hazards approach specific for businesses to prepare together before emergencies; activate a local communication network during emergencies; and support recovery after emergencies. A CRT is community-led; it is formed by businesses for businesses with support from Red Cross and other services.

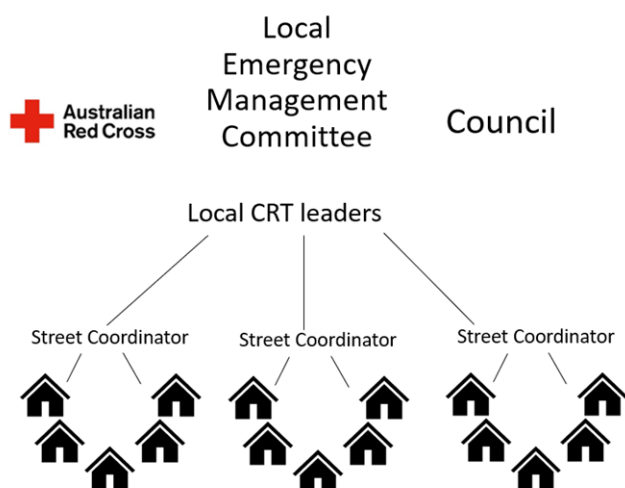
How will a CRT help me and my business?

Is your business prepared for an emergency? Do you have a Business Continuity Plan? What is your trigger to pack up your business? CRTs provide community connectedness, education on property and business preparedness, as well as a communication network to share and receive information. Working together as a community builds resilience and empowers businesses to know their trigger points and when it's the best time to start pack and / or leave.

At its core, a CRT is a communication network linking neighbours / businesses, which provides support around emergency preparedness and recovery. A CRT helps businesses to:

- link to emergency services agencies for expert advice before emergencies
- connect with services that support business preparedness and recovery (e.g. Service NSW, Business Connect, Council Economic Development Team)
- support individual and joint emergency preparedness amongst neighbours / neighbouring businesses
- raise awareness of local disaster risks
- combine resources to improve community preparedness and recovery.

A CRT is not a response team and does not perform rescues. A CRT provides a way to make the best use of everyone's knowledge, resources and relationships before, during and after emergencies. Each business is responsible to make their own decisions and implement their own plan.



How are CRTs formed?

A local team is formed, ideally with a local Team Leader and /or Street / Area Coordinators.

Red Cross supports the CRT to connect with like-minded businesses, community members and emergency services.

CRTs operate in a voluntary opt-in arrangement.

Community meetings are held to support planning, discuss preparedness and share community strengths, skills and resources.

If you are interested in joining a Business CRT, please contact:
NSWRESILIENCE@redcross.org.au